



# APRIL NEWSLETTER

## Upcoming

### Upcoming Events

SANTA MONICA MOUNTAINS  
FIRE SAFE COUNCIL

APRIL  
12



**Firesafe Palisades Wildfire Safety Workshop**  
Come meet your neighbors and join us to learn about fire safety and home hardening!



APRIL  
18



**Earth Day Planting @ the Malibu Forestry Unit**  
Help plant native vegetation in our demonstration garden!



APRIL  
25



**GSOB Field Trip**  
Join us for a field trip to an infested site to gain hands on experience identifying GSOB!



APRIL  
29



**Monthly Firewise Networking Call**  
Meet and connect with other firewise communities!



@smm\_fsc  
<https://www.smmfsc.org/>

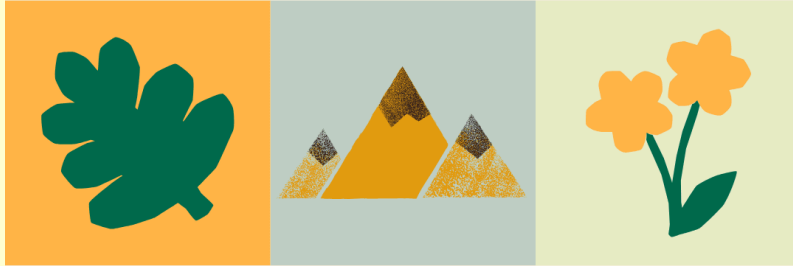
Wildfire Safety Workshop

Earth Day Planting

GSOB Field Trip

Firewise Networking Call

Save the Date!



The 2<sup>nd</sup> Annual

# FIRE SAFE FESTIVAL

Join us for an educational, fun, and family-friendly afternoon all about wildfire learning!

**MAY 16**

**10 AM - 1 PM**

Wildfire Learning Center | Parking at Tapia Park



Learn more at [smmfsc.org](http://smmfsc.org)



## March Recap



**Volunteer Planting Day**



This past month we held two volunteer planting days at the Wildfire Learning Center at the Malibu Forestry Unit. Community members came out to help plant a meadow in the demo garden which is used to showcase proper defensible space, while still maintaining aesthetics. We planted over 2,000 Dune Sedges, Little Ears, and Lagunitas and want to extend a huge thanks to all the volunteers who came out to help! Join us on April 18th to help finish the garden!

[Volunteer this month!](#)

## Westlake Pointe Community Workday



On Saturday, March 21st we hosted a community workday with the Westlake Pointe FireWise community. With twenty people coming out in the heat to help clear hazardous debris, we were able to completely fill a 40 yard dumpster! We want to thank all the passionate volunteers that helped make a difference in this community!

## GSOB Training



[Review GSOB Training Here](#)

On March 24th we held our in-person GSOB training session. A huge thanks to Wen Wang from LA County Fire-Forestry Division and Rachel Burnap from LA County Agricultural Commissioner Weights and Measures for great presentations on GSOB. Their experience and expertise with GSOB truly made the sessions valuable and would not have been as successful without their collaboration. Watch the recorded virtual session by Rachel Burnap and review the slides presented by Wen Wang on our website.

# Home Hardening and Defensible Space Monthly Tips



## FIRE SAFETY 101: SIDING AND EAVES

For more information visit [smmfsc.org](http://smmfsc.org) to stay informed on the latest educational material from our monthly fires safety series

### FIRE SAFE SIDING



Siding and exterior walls are susceptible to direct flames and radiant heat. Fire can easily spread if siding is ignited. Non-combustible, well-maintained siding is crucial in order to protect from wind blown embers and radiant heat.

Non-combustible siding includes stucco, brick, and fiber-cement such as Hardie siding. Avoid vinyl, poorly maintained wood, and non pressure impregnated fire-retardant treated wood siding.

Kindly be advised, fire retardant paint is not an effective fire prevention solution. However, annual wood rot and termite inspections point out structure vulnerabilities that should be repaired.

### SIDING MATERIALS



**WOOD SIDING**  
If wood siding is present, ensure it is well-maintained. Schedule an annual termite/wood-rot inspection to call out any vulnerabilities in the wood structure that need to be sealed.

**MAINTENANCE**  
Keep siding in good condition. Watch for warping or gaps and seal any openings with caulking.

**WOOD MAINTENANCE**  
Wood siding will be fire resilient if there are no gaps, no rot, and it is well sealed with paint (weather-resistant paint is recommended, fire retardant paint is not effective).

### SKIRTING/ SIDING BUFFERS

**SKIRTING**  
If siding is combustible, it is strongly recommended at least 6 inches of non-combustible material be added to base of your structure, this will act as a siding buffer. Ensure there are no gaps or cracks.



**MATERIALS**  
This can be made out of the same non-combustible siding as the home or often is a section of concrete, stucco, or metal below the siding.

### EAVES AND SOFFITS

**EAVES + FASCIA**  
Eaves connect the roof to the fascia board, which runs along the lower edge of the roofline, or wall. If the eaves are exposed they are highly vulnerable to wind-blown embers, direct flame contact, and radiant heat.



**SOFFITS**  
A soffit encloses the underside of sloped or flat-roof overhangs.

### FIRE SAFE EAVES

Ideally, eaves should be made of a non-combustible material, be in good condition, and enclosed.



If wooded and open eaves are present, fill gaps with caulking, repaint with weather resistant paint, and watch for wood rot.

### RESOURCES

Check out [defensiblespace.org](http://defensiblespace.org) and [fire.ca.gov/buildingmaterials](http://fire.ca.gov/buildingmaterials) for more information



Santa Monica Mountains Fire Safe Council  
[www.smmfsc.org](http://www.smmfsc.org)

## Zone Zero Meeting

Join the California Board of Forestry and Fire Protection's Zone 0 Regulatory Advisory Committee to discuss the most recent draft of the zone zero regulations!

**Thursday, April 23, 2026**  
**1-7pm**  
**Calabasas Community Center**  
**The Grove Room**  
**27040 Malibu Hills Rd. Calabasas, CA**

Register for Online Meeting

Register for in-Person Meeting

If you would like to unsubscribe, please click [here](#).

